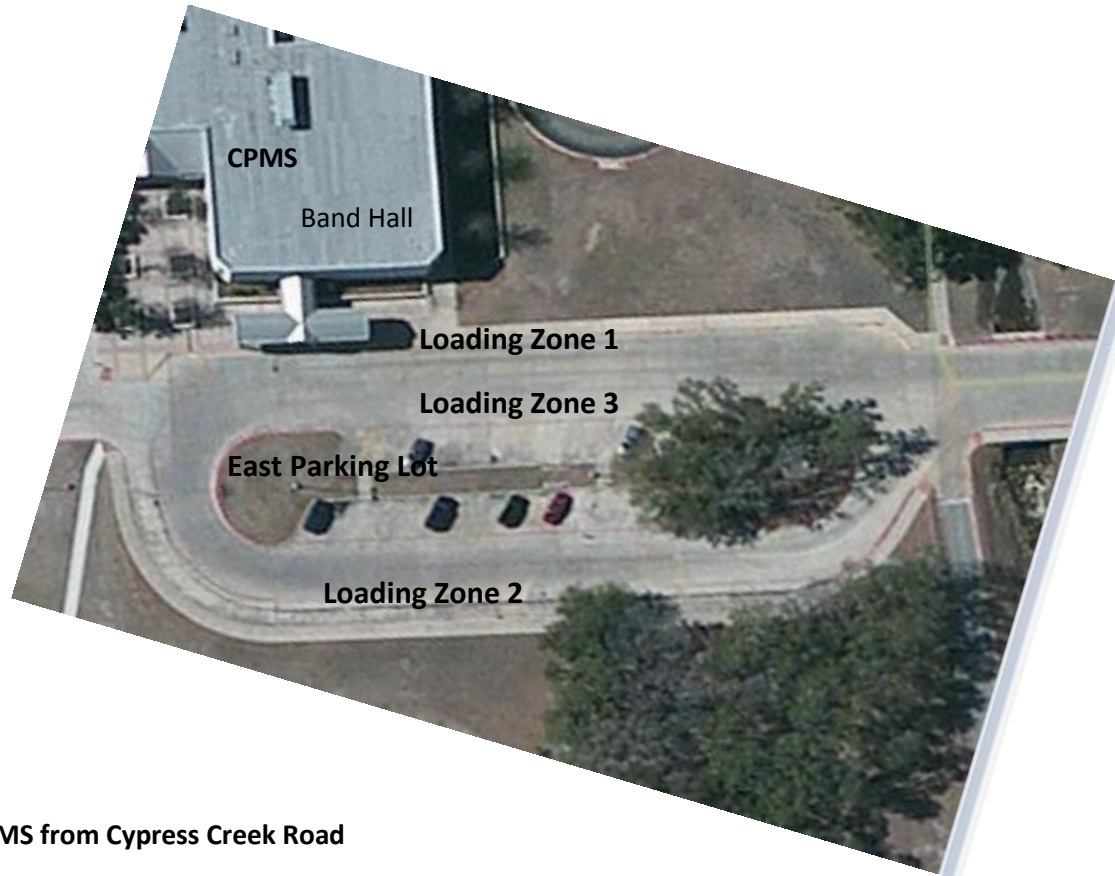


## Traffic Flow Map for Cedar Park Middle School – East Parking Lot



### Access to CPMS from Cypress Creek Road

**Loading Zone 1** – Students should enter/exit vehicle from the passenger side. Drivers will exit this zone by signaling and moving to the center lane. Watch for students & other vehicles.

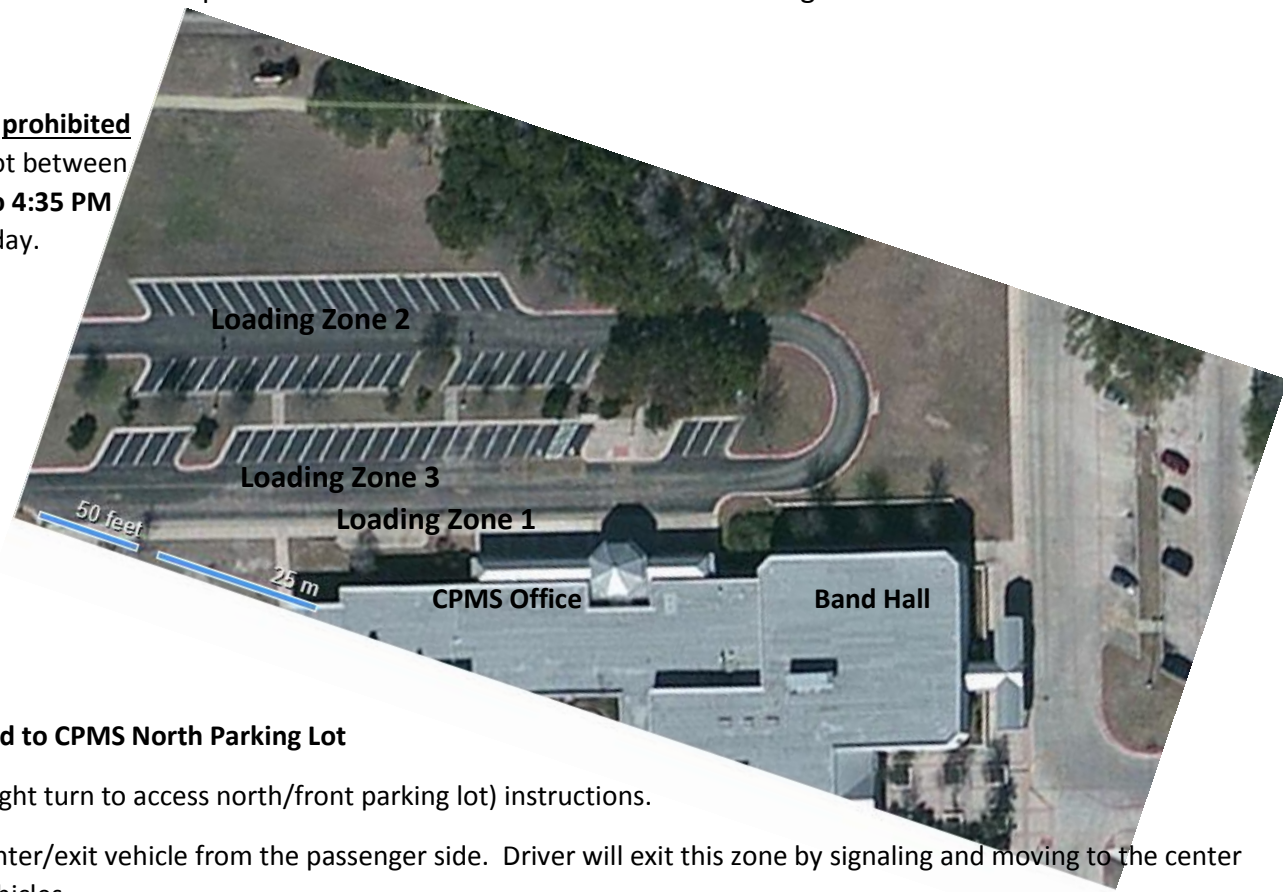
**Loading Zone 2** – Students should enter/exit vehicle from the passenger side. Students will use the sidewalk behind the fence. Drivers will exit this zone by signaling and moving to the left. Watch for students and other vehicles.

**Loading Zone 3** – In the afternoon only, Students will use crosswalk to get to center parking lot then walk between parked cars and vehicles waiting in Loading Zone 3. Students will enter/exit vehicle using *driver's side* of vehicle. Use this zone when other loading zones are full. Watch for students and vehicles. In the morning, this lane is for access to parking spaces and should not be used for dropping off students.

**Safety First:** Drive slowly and watch for students. Once the vehicle is stopped and is in park, students may enter/exit vehicle. Students should look for other vehicles passing yours. Drivers should anticipate others that are not familiar with the loading zones and traffic flow. Alternate locations off campus considered to be safe may be an option; however, do not drop-off or pick-up students on Cypress Creek Road.

## Traffic Flow Map for Cedar Park Middle School – North Parking Lot

**South bound traffic** on Sun Chase is **prohibited** from turning left to access parking lot between **8:25 AM to 9:05 AM and 3:55 PM to 4:35 PM** on School days Monday through Friday.



### Access to CPMS from Sun Chase Blvd to CPMS North Parking Lot

North bound traffic on Sun Chase (right turn to access north/front parking lot) instructions.

**Loading Zone 1** – Students should enter/exit vehicle from the passenger side. Driver will exit this zone by signaling and moving to the center lane. Watch for students & other vehicles.

**Loading Zone 2** – Students should enter/exit vehicle from the passenger side. Students will walk on grass behind parking area. Driver will exit this zone by signaling and moving to the left. Watch for students and other vehicles.

**Loading Zone 3** – In the afternoon only, Students will use crosswalk to get to center parking lot then walk between parked cars and vehicles waiting in Loading Zone 3. Students will enter/exit vehicle using *driver's side* of vehicle. Use this zone when other loading zones are full. Watch for students and vehicles. In the morning, this lane is for access to parking spaces and should not be used for dropping off students.

**Safety First:** Alternate locations off campus considered to be safe may be an option; however, do not drop-off or pick-up students on Sun Chase Blvd. Drive slowly and watch for students. Once the vehicle is stopped and is in park, students may enter/exit vehicle. Students should look for other vehicles passing yours. Drivers should anticipate others that are not familiar with the loading zones and traffic flow.

## Traffic Flow Map for Cedar Park Middle School – South Parking Lot



### Access to CPMS from Sun Chase Blvd to CPMS South Parking Lot

#### During School - School Buses and Faculty Parking

**School Bus Loading Zone** – Students should enter/exit school bus from the passenger side. Driver will exit this zone by signaling and moving to the left lane. Watch for students and other vehicles. Access this parking lot by using the southernmost one-way driveway. Vehicles exit this parking lot by using the northern one-way driveway.

**South Parking Lot** is for faculty parking and school buses during school. This is not a student drop-off or pick-up parking lot. Alternate locations off campus considered to be safe may be an option; however, do not drop-off or pick-up students on Sun Chase Blvd.

#### During Special Events – Open House & Sporting Events

This parking lot is available for Open House Events, Sporting Events and Special Events. Use designated parking spaces and avoid parking in fire lanes that are designated by red paint.

**Safety First:** Pedestrians should look for other moving vehicles and use crosswalks. Drivers should anticipate others that are not familiar with the loading zone and traffic flow.